

# **IKEA ULL Manager 2017 User Guide**

**IKEA**

August 29<sup>th</sup>, 2017 | Revision: 1.0

**Prepared for**  
IKEA

**Prepared by**  
Izidor Jereb  
NiceLabel

# Index

- 1     **INSTALLATION** .....3
- 1.1   Installing Software and Printer Drivers .....3
- 1.2   Activating NiceLabel software .....4
- 1.3   Location of Installed files IKEA ULL Manager 2017 Files .....5
- 1.4   System Requirements .....5
- 2     **PRINTING LABELS FROM IKEA ULL MANAGER 2017 MANUALLY** .....6
- 2.1   IKEA ULL Manager 2017 Main Window .....6
- 2.2   Setting multiuser environment .....6
- 2.3   Configuring IKEA ULL Manager .....7
- 2.4   Managing Product Data .....8
- 2.5   Printing Labels .....10
- 2.6   Reprinting Labels and Viewing the Log File .....11
- 3     **PRINTING LABELS AUTOMATICALLY** .....13
- 3.1   Introduction to NiceLabel Automation .....13
- 3.2   Configuring the NiceLabel Automation .....13
- 4     **TECHNICAL SUPPORT** .....14

# 1 Installation

IKEA ULL Manager installs as an add-on to NiceLabel software. All necessary IKEA ULL files are packed in the file OEM.DAT that is enclosed with the installation of NiceLabel software.

The IKEA ULL Manager 2017 contains the following components:

1. NiceLabel PowerForms Suite
2. IKEA ULL Manager 2017 add-on to NiceLabel software containing:
  - Pre-designed solution for printing labels for IKEA (ULLManager.nsln file)
  - Sample configuration for NiceLabel Automation (for automatic printing)
3. IKEA ULL Manager 2017 User Guide
4. IKEA ULL Manager 2017 Administration Guide

## 1.1 Installing Software and Printer Drivers

### Install IKEA ULL Manager 2017 with Installation from the Web

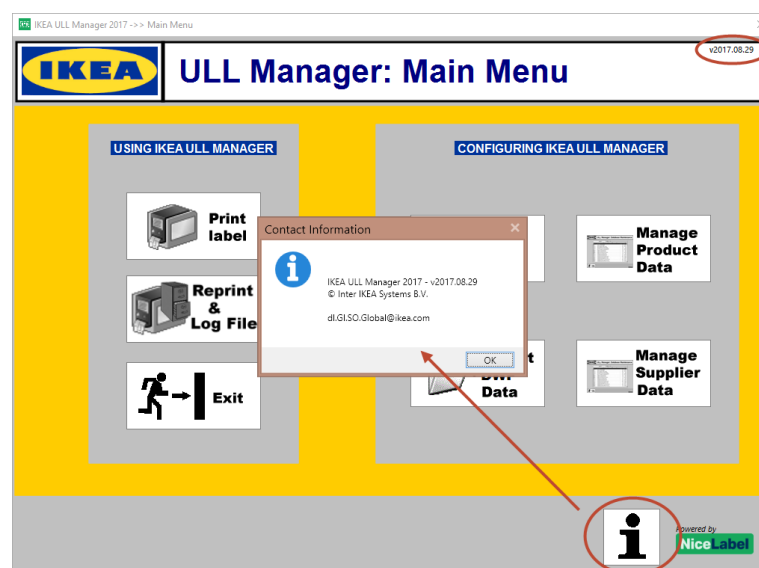
Follow these installation steps:

1. Download the installation from the Web.
2. Unpack downloaded file **IKEAULLManager2017.zip**
3. Double click on the file **NiceLabel2017.exe** to start the installation of NiceLabel 2017/ IKEA ULL Manager 2017.
4. Follow on-screen instructions.
5. Double-click the shortcut icon on the desktop to start the IKEA ULL Manager.

You can also see the detailed installation procedure in the NiceLabel 2017 Installation Guide. Installation of IKEA ULL Manager 2017 follows the same steps. You can download the Installation Guide from the NiceLabel product Web site.

### Check if correct version is installed

To make sure that correct version is installed check message at Info button or top right corner. Version of ULL manager should be in form v2017.xx.yy



## Install Printer Drivers

Before the user can print labels, the printer driver for the label printer must be installed on the same PC. The printer driver will automatically show in the list of available printers in the IKEA ULL Manager 2017.

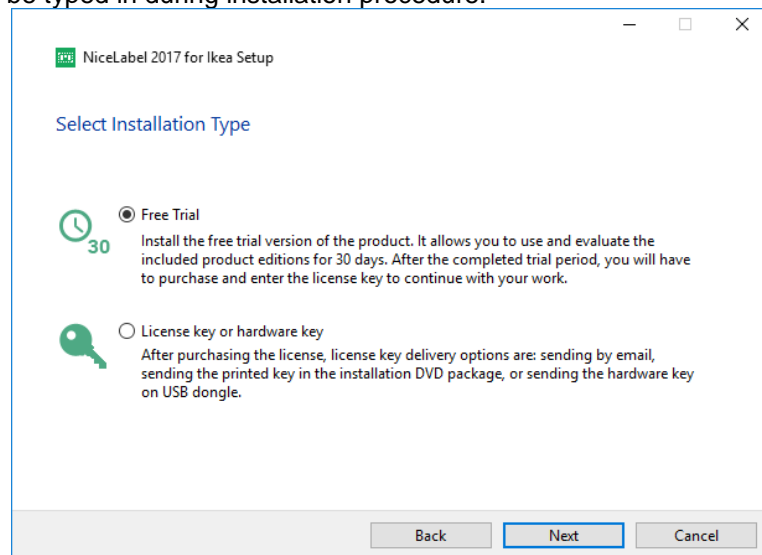
- If you use the thermal printers, install NiceLabel Printer Drivers. You can download them from NiceLabel Web site <https://www.nicelabel.com/downloads/printer-drivers>
- If you use a laser, inkjet or similar printers, the printer drivers are provided with the printer

## 1.2 Activating NiceLabel software

IKEA ULL Manager 2017 is based on the NiceLabel PowerForms Suite edition. To activate IKEA ULL Manager 2017, you must follow the procedure for NiceLabel PowerForms Suite activation. Once NiceLabel is activated, IKEA ULL Manager 2017 will activate as well.

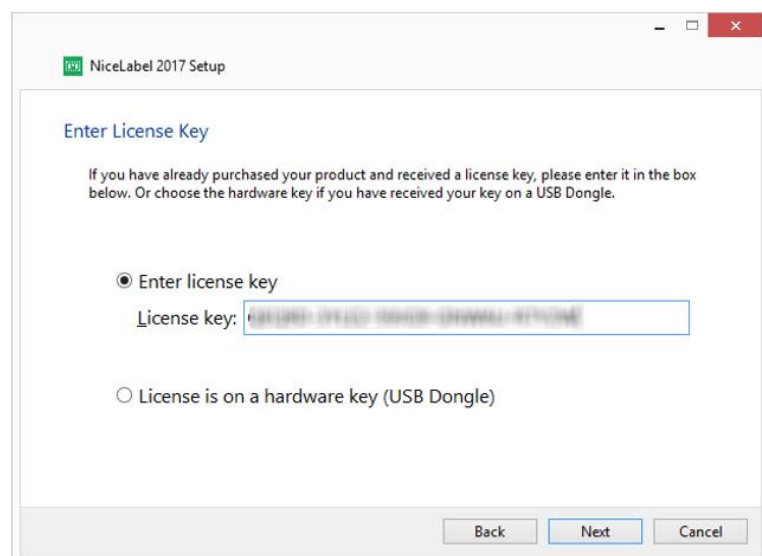
The activation software key has been provided with the IKEA ULL Manager 2017.

Activation key should be typed in during installation procedure.



Here select "License key or hardware key".

In next step type license key and proceed with installation.



## 1.3 Location of Installed files IKEA ULL Manager 2017 Files

NiceLabel software (the framework for the IKEA ULL Manager 2017 solution) can be installed to any location specified during the installation, a default location is:

**C:\Program Files\NiceLabel\NiceLabel 2017\**

Make sure you have the administrative permissions on the computer where you are installing the software. Installation of the ULL Manager 2017 software will:

- Copy NiceLabel files to C:\Program Files\NiceLabel\ folder
- Copy NiceLabel files to C:\Program Data\NiceLabel
- Copy the IKEA ULL Manager 2017 files to the c:\IKEAULLManager2017 folder

The content of the **IKEAULLManager2017** folder is:

Folder	Description
.	<ul style="list-style-type: none"><li>• ULLManager2017.nsln ... IKEA ULL Manager solution file</li><li>• ULLTrigger.mixx ... NiceLabel Automation configuration file (for automatic printing only)</li></ul>
Database	Database files (local DWP product and settings database, Log database)
Graphics	Images (NiceLabel logotype)
Documents	IKEA ULL Manager 2017 documents <ul style="list-style-type: none"><li>• ULLManager 2017 User Guide</li><li>• ULLManager 2017 Administration Guide</li></ul>

## 1.4 System Requirements

NiceLabel IKEA ULL Manager 2017 is based on NiceLabel PowerForms software version 2017.

All requirements for NiceLabel software apply to IKEA ULL Manager 2017 as well. See the following Web site for details:

<http://www.nicelabel.com/Products/Specifications/System-requirements>

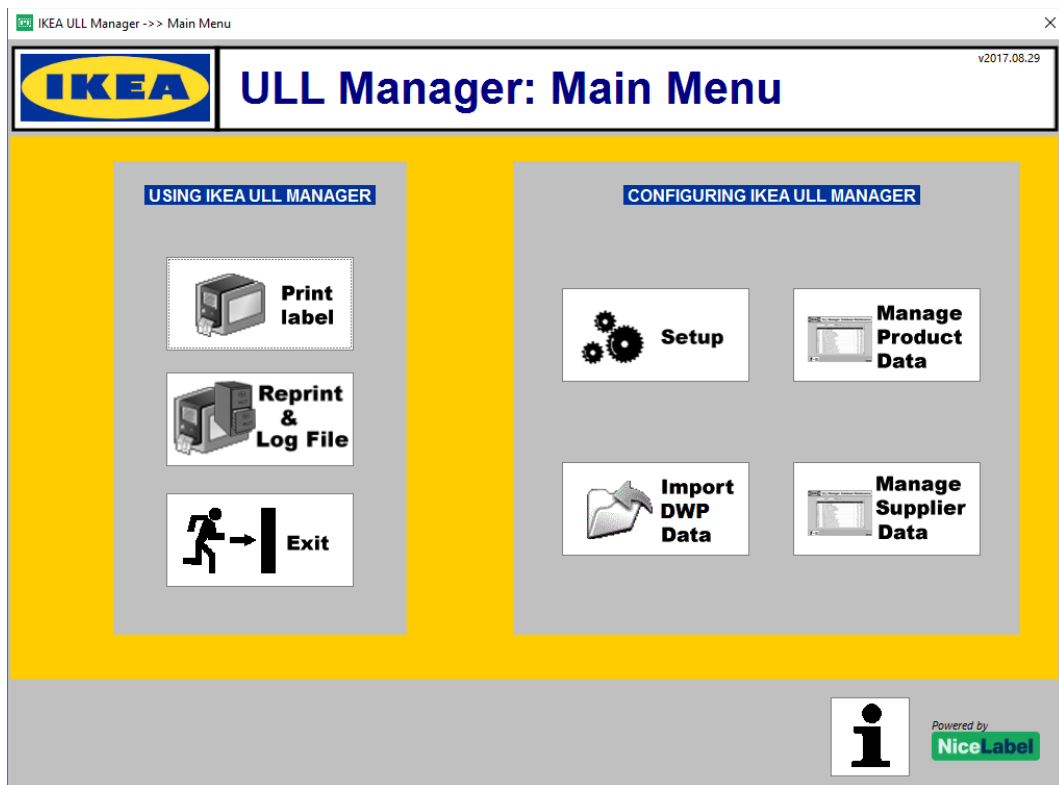
# 2 Printing Labels from IKEA ULL Manager 2017 Manually

This section provides details for using IKEA ULL Manager 2017 on supplier computers.

## 2.1 IKEA ULL Manager 2017 Main Window

The main menu provides links to all IKEA ULL Manager 2017 submenus:

- Printing labels (Print Label)
- Configuring application preferences (Setup)
- Managing product data
- Manage supplier data
- Importing product data from DWP CSV (Import DWP Data)
- Reprint and Log File

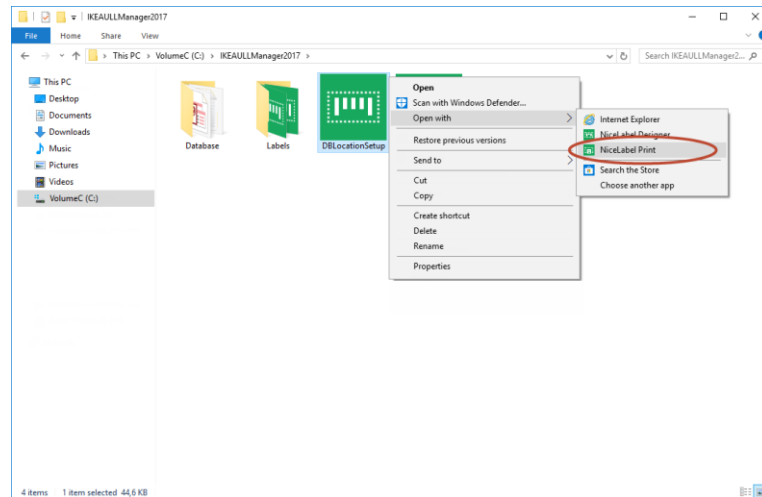


IKEA ULL Manager 2017 Main Menu

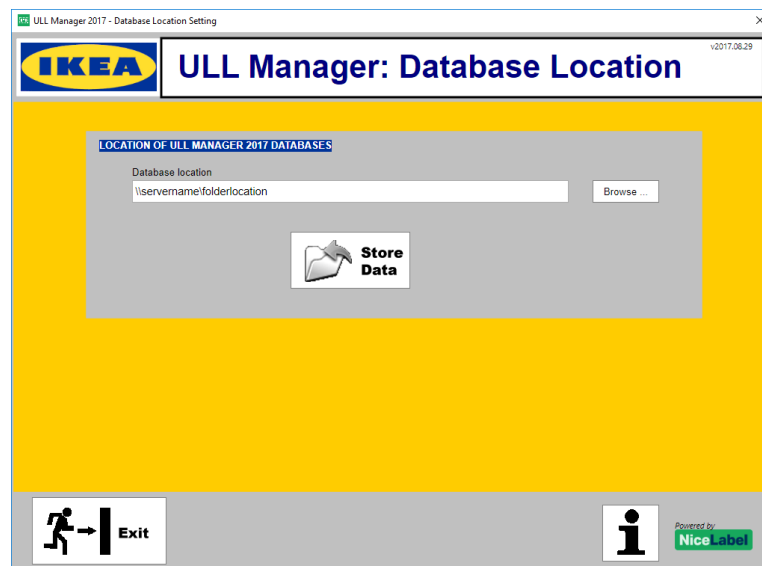
## 2.2 Setting multiuser environment

If there is a requirement for printing from several locations two database files (EcisUll.mdb and PrintLog.mdb) need to be located on some shared network location (i.e. [\\servername\sharedfolder](#)).

In order to enable this option prior running ULLManager from desktop, go to C:\IKEAULLManager2017 folder and run solution named DBLocationSetup.nsln.



The following window will open.



Here Browse... for folder location where you previously copied EcisUll.mdb and PrintLog.mdb files. Source files can be found in "c:\IKEAULLManager2017\Database\" folder right after installation is complete. When you click on Save Data, IKEA ULL Manager 2017 is ready to use database files from that new location (common for all clients). All clients which will use IKEA ULL Manager 2017 must run this tool in order to point to shared folder for shared database.

## 2.3 Configuring IKEA ULL Manager

The IKEA ULL labels encode the information about the Supplier ID and SSCC number. Before you can use IKEA ULL Manager 2017, you must configure it by setting the correct values for your unique Supplier ID and SSCC number.

To configure the IKEA ULL Manager 2017, do the following:

1. Double-click the 'IKEA ULL Manager 2017' shortcut on the desktop.
2. In the main menu click on the button **Setup**.
3. Fill-in the required information for the manual printing.
  - Supplier Code: the IKEA supplier number, 5 digits. Please contact your local IKEA office for assistance.

- SSCC Supplier part: the company prefix in the EAN.UCC numbering scheme, up to 13 digits. Please contact your local IKEA office for assistance.
  - SSCC starting value: Enter the starting value from which you will start identifying packages for IKEA. Each label will have a unique SSCC counter value.
  - Quantity of identical labels: define how many identical labels for the same product you want to print, max. 3 digits.
4. Fill-in the required information for the automatic printing.
    - The printer to which labels will print.
    - The default label template you want to print.
  5. To store the entered values, click on the button **Store Data**.

**Note:** If you made a mistake and have entered incorrect values, enter the valid data, then click on the button Store Data again. Make sure the right side of the window displays requested values.

6. To return to the main menu, click on the button **Main Menu**.

The right side of the form will show the currently defined preferences. This is useful if you want to verify the current settings, if you do not remember what you have entered previous time.

Setting the application preferences

## 2.4 Managing Product Data

The IKEA ULL Manager 2017 installs with the empty product database. Before you can print the labels, you must fill the database with your product information.

There are the following possibilities to fill the product database:

- Manual database maintenance



- Import the product information from DWP CSV file

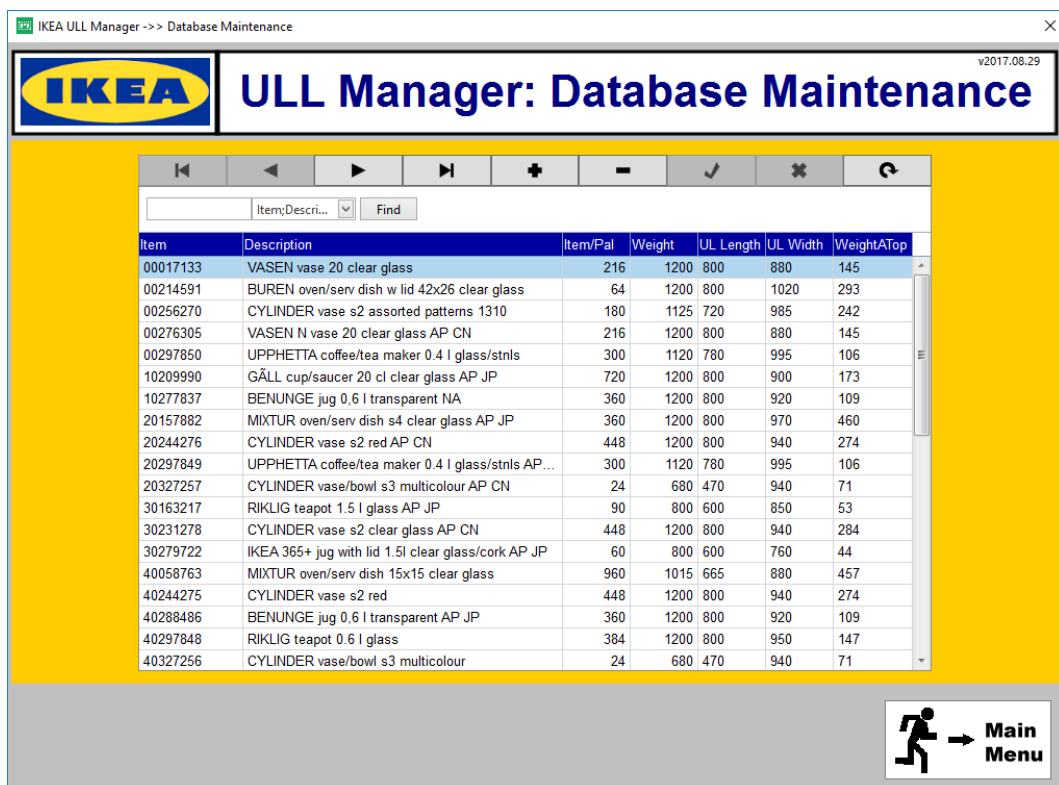
## Manual Database Maintenance

To manually enter the product information, do the following:

1. Double-click the 'IKEA ULL Manager 2017' shortcut on the desktop.
2. In the main menu click on the button **Manage Product Data**.  
The 'Database Maintenance' window will open.
3. Type in the information for your product. You can enter data directly into the provided table.  
Each line stores the data for one product.
4. To add an information for new product, click the 'plus' button in the toolbar.

**Note:** Make sure to fill in all required columns for your product.

5. To remove the product, select it and click on the 'minus' button in the toolbar.
6. You can use the arrow buttons in the table toolbar to navigate through the database.
7. When finished with entering data, click on the button **Main Menu**.



Entering product data manually

## Importing product data from DWP CSV file

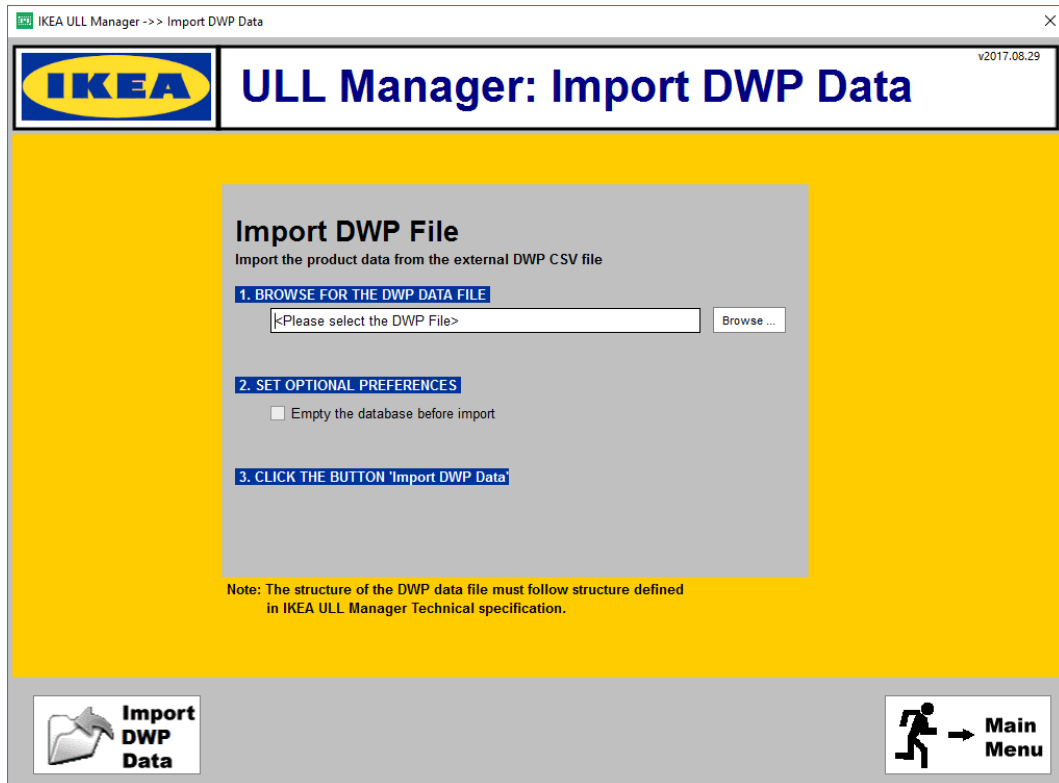
To import product data from the existing DWP CSV file, do the following:

1. Double-click the 'IKEA ULL Manager 2017' shortcut on the desktop.
2. In the main menu click on the button **Import DWP Data**.  
The 'Import DWP Data' window will open.
3. Click on the browse button and select your DWP CSV file.
4. Enable the option **Empty the database before import** if you want to empty the current database before import.

**Note:** Use this option with caution! When enabled all existing products in your local IKEA ULL Manager 2017 product database will be removed.

5. Click on the button **Import DWP Data** to start importing data into the local IKEA ULL Manager 2017 product database.

- To return to the main menu, click on the **Main Menu** button.



Importing data from DWP CSV data files

## 2.5 Printing Labels

The workflow for the manual label printing is:

- Double-click the 'IKEA ULL Manager 2017' shortcut on the desktop.
- In the main menu click on the button **Print label**.  
The 'Label Printing' window will open.
- Selects the label template to print. The selection can be made in the list box between two labels: 'ULL 105' and 'ULL 148'.
- Select the label printer where the labels will print to. All printer drivers installed on the computer will display in a combo box.
- Select the date to use on the labels. A suggested default value is a current date.
- Define the number of unique SSCC labels that you want to print. Each printed SSCC label automatically increments the counter in the SSCC bar code.
- If the selected label template is ULL 148, the three optional Supplier Fields will also print on the label. You can set the values for Supplier Fields with the button 'Manage Supplier Data' in the Main Menu.
- Select the product in the database. Values of the selected product will be printed on the label.

**Note:** The database table object provides read-only access to the database. You cannot modify the values in the database here. A separate 'Database Maintenance' form is provided for this purpose in the Main Menu.

- The live label preview will update each time when you select a new product in a database. You can verify for the correctly selected label template and product from the database to make sure a correct label template and data will print out.
- When ready click on the button **Print Label**.

**Note:** The label will print out in as many identical copies (labels with identical data values, including identical SSCC bar codes) as specified in the preferences.

11. If you want to go back to IKEA ULL Manager 2017 main window, click on the **Main Menu** button.

Item	Description	Item/Pal	Weight
00017133	VASEN vase 20 clear glass	216	1200
00214591	BUREN oven/serv dish w lid 42x26 clear glass	64	1200
00256270	CYLINDER vase s2 assorted patterns 1310	180	1125
00276305	VASEN N vase 20 clear glass AP CN	216	1200
00297850	UPPHETTA coffee/tea maker 0.4 l glass/stnls	300	1120
10209990	GÄLL cup/saucer 20 cl clear glass AP JP	720	1200
10277837	BENUNGE jug 0.6 l transparent NA	360	1200
20157882	MIXTUR oven/serv dish s4 clear glass AP JP	360	1200
20244276	CYLINDER vase s2 red AP CN	448	1200
20297849	UPPHETTA coffee/tea maker 0.4 l glass/stnls AP JP	300	1120
20327257	CYLINDER vase/bowl s3 multicolour AP CN	24	680
30163217	RIKLIIG teapot 1.5 l glass AP JP	90	800
30234378	CYLINDER vase s2 clear glass AP CN	448	1200

Printing labels manually from IKEA ULL Manager

## 2.6 Reprinting Labels and Viewing the Log File

IKEA ULL Manager 2017 logs information about labels printed. The data like which label was printed to what printer at what time with what values is stored in the log file (ReprintLog.mdb Access database).

The log database makes it quite simple for the user to look at the information about printed labels and even more, to reprint the same set of labels again with exactly the same data as the first time.

To reprint the labels, do the following:

1. Double-click the 'IKEA ULL Manager 2017' shortcut on the desktop.
2. In the main menu click on the **Reprint & Log File** button.  
The 'Reprint' window will open.
3. Select the product for which you would like to reprint the label. Also check "Print Date" to distinguish between different print jobs for the same product.
4. In table below select which label from that print job you would like to reprint.
5. Select "Reprint quantity"
6. Select printer to which you would like to reprint the label
7. Click the **Print** button.



# ULL Manager: Reprint

Select printer

Microsoft XPS Document Writer



**Printer Setup**



**Print label**



**Main Menu**

Reprint Quantity

1

## Print Log

Product Na...

Product Name	Product Number	Label	Printer	Print Date	Quantity
BENUNGE jug 0,6 l transparent AP JP	40288488	ULL 105	\\vidor\ZEBRA TLP 3842	25.08.2017 12:23:12.657050	1
FÄRTROLIG food cntnr 17x23x9 clear glass	50233790	ULL 148	\\vidor\ZEBRA TLP 3842	25.08.2017 12:23:21.926141	1

## Label Details

Product Number	Item/Pal	Weight	Size 1	Size 2	WeightAtop	Supplier 1	Supplier 2	Supplier 3	SSCC code 1	SSCC code 2
40288488	360	1200	800	920	109				222456	12312312313

Reprinting labels and viewing the log file

# 3 Printing Labels Automatically

---

IKEA ULL Manager 2017 also provides automatic label printing functionality.

In the automatic label printing mode the labels do not print based on the user's activity in the software, but based on the data received from the hardware device. The bar code scanner connected to the serial port provides a data that triggers label printing. The scanner must return the Product ID (Item) of the product. When the data is received the requested label will print out with the correct data for the product. The product values are returned from the database with a database-lookup (query) based on the Item number.

**Note:** To successfully print labels in automatic mode, you must first set up product database, IKEA ULL Manager 2017 preferences and bar code scanner communication parameters.

## 3.1 Introduction to NiceLabel Automation

The automatic label printing is handled by NiceLabel Automation. The application installs automatically with IKEA ULL Manager 2017. NiceLabel Automation is an event-based application that starts pre-define actions as soon as the trigger event is detected. For IKEA ULL Manager 2017, the monitored trigger event is data received from the bar code scanner connected to the serial port.

The sample NiceLabel Automation configuration is provided with the ULL Manager 2017. You can use it as foundation upon which you build your custom automatic printing solution.

**Note:** The sample configuration is just that, **a sample** to help you understand how to properly set up NiceLabel Automation application. The sample configuration cannot be used in your particular environment out-of-the-box. You have to modify it and some NiceLabel Automation knowledge is required to set up a solution.

## 3.2 Configuring the NiceLabel Automation

To configure NiceLabel Automation, do the following:

1. Start NiceLabel Automation Builder application
2. Select File -> Open.
3. Browse to the sample NiceLabel Automation configuration file  
C:\IKEAULLManager2017\ULLtrigger.misx
4. Click on Edit button next to "**Receive data over the serial port**" trigger. Its properties will open in separate tab.
5. Go to the **Receive data over the serial port** tab.
6. In Settings-General make sure the COM port with connected bar code scanner is selected (COM1 by default).
7. Expand **Port Settings** on the right and define the connection parameters.
8. The sample NiceLabel Automation configuration is set up to automatically print labels whenever 8 characters are received on the serial port.  
If your scanner provides different value length, or you want to trigger label printing using some other criteria make sure to adjust the section **Data retrieval**.
9. When ready with your NiceLabel Automation preferences select **File -> Save** to store the new trigger configuration to disk.
10. In order to run configuration start NiceLabel Automation Manager and click on **+Add** button to add saved configuration.
11. When configuration opens click on Start to start monitoring COM port.

Setting up NiceLabel Automation requires some advanced integration knowledge.

For more information about NiceLabel Automation please see the NiceLabel Automation User Guide.

# 4 Technical Support

---

For any issue or question for the IKEA ULL Manager contact IKEA technical support