

### About Range Printing

Range Printing extracts data for printing from another source. You must create a query that instructs Loftware Label Manager to print a selected group of records from a database. In addition, Range Printing is used only with labels that are attached to a database.

Within Range Printing, you can:

- Use the Query Assistant to select a range without using SQL queries.
- Create an SQL query and print a selected range of labels.
- Save queries for frequently printed ranges.
- Create an icon on the Windows desktop to run frequently used queries.
- Launch Range Printing from your own application, using command line parameters to control the printing process.
- Launch Range Printing remotely from Loftware's LPS utility program.

#### Related Information

For additional information regarding integrating the Loftware Print Server with your own applications, refer to The Loftware Print Server section of the Loftware Print Server User's Guide.

### Range Printing Example

Assume that you are working with an inventory label named INVTAG.LWL that has the following fields attached to a database:

- Item number, attached to database field PARTNO
- Item description, attached to database field DESC
- The warehouse row location of the part, attached to database field ROW
- An illustration of the part, attached to database field IMAGE

## Range Printing

You want to print a series of inventory labels for selected locations (for example Rows A through H), sorted by part number.

### Range Print a Series of Labels

1. Select Start | Programs | Software Labeling | Range Print 32
2. The Range Printing application is displayed and the file open dialog box is presented.
3. Select the label you wish to print, (in this case INVTAG.LWL), and click **OK**.
4. Define the Query in the Define Query dialog box following these steps:
  - a. Click **Select From** in the Range group box.
  - b. Set the **Select From** field to ROW.
  - c. Set the **Starting Value** to A and the End Value: to H.
  - d. Set the Field to PARTNO. Click **OK**.
5. Print labels by selecting File | Print or click the printer icon for the printer to which you want to print.

### Labels That Can Be Range Printed

You can range print:

- Any label that is connected to a single database or relational database.
- Any label with one and only one database-key field (Get Value From = Keyboard).
- Any label connected to multiple databases if all databases share the same database key field. For multiple database connections, you can only select records using the key field.

#### Related Information

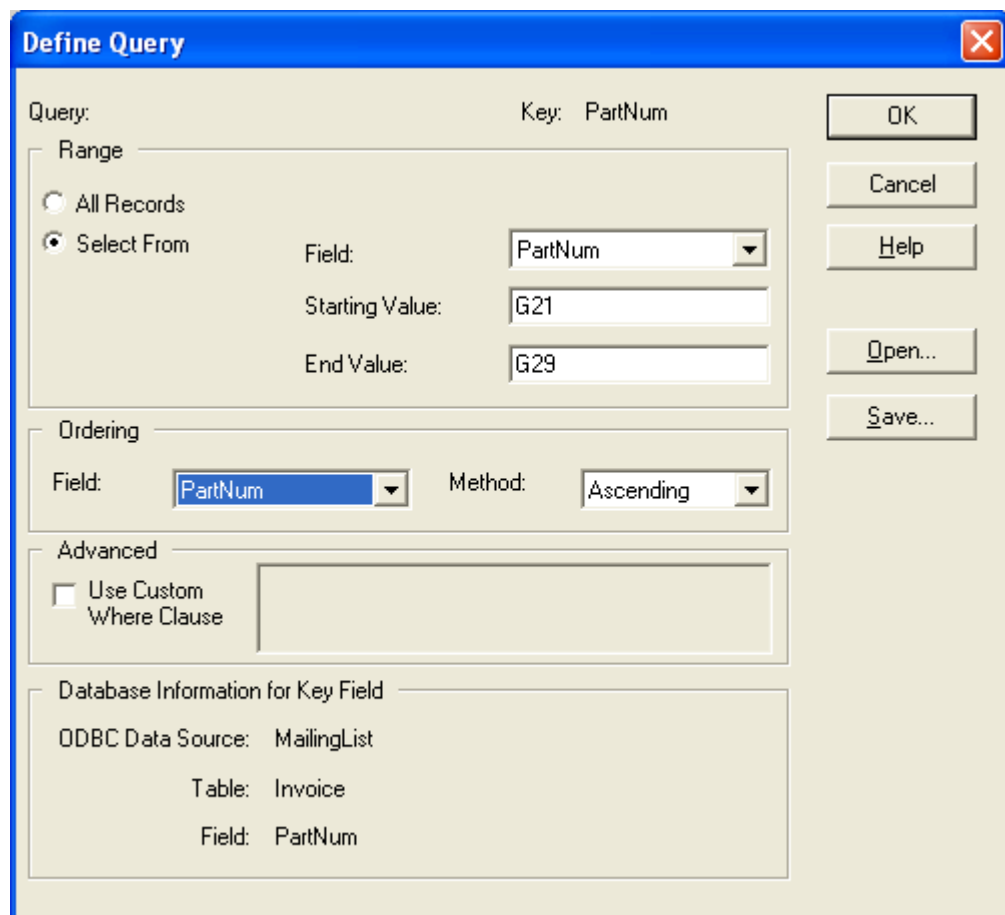
For more information on attaching a database to a label and creating a Database-Key, refer to the Data Sources section in this guide.

## Creating a Query

Loftware Label Manager uses standard SQL queries to retrieve information from a database. Fortunately, you do not have to know anything about SQL to use Range Printing. Using the Query Assistant, you just specify the records you want to select and which field you want to sort on (if any) and the Query Assistant creates the SQL statements for you.

### Accessing the Query Assistant

- Whenever you load a new label, Range Printing presents the Define Query dialog box.
- Use the Query | Define Query menu command.



The image shows the 'Define Query' dialog box in Loftware Label Manager. The dialog has a blue title bar with the text 'Define Query' and a close button (X) in the top right corner. The main area is divided into several sections:

- Query:** A label 'Query:' is followed by a text field containing 'Range'. To the right, 'Key: PartNum' is displayed.
- Range:** A section with two radio buttons: 'All Records' (unselected) and 'Select From' (selected). To the right of 'Select From' are three fields: 'Field:' with a dropdown menu showing 'PartNum', 'Starting Value:' with a text field containing 'G21', and 'End Value:' with a text field containing 'G29'.
- Ordering:** A section with 'Field:' and 'Method:' labels. 'Field:' has a dropdown menu showing 'PartNum'. 'Method:' has a dropdown menu showing 'Ascending'.
- Advanced:** A section with a checkbox labeled 'Use Custom Where Clause' which is currently unchecked. To the right of the checkbox is an empty text area.
- Database Information for Key Field:** A section with three lines of text: 'ODBC Data Source: MailingList', 'Table: Invoice', and 'Field: PartNum'.

On the right side of the dialog, there are five buttons stacked vertically: 'OK', 'Cancel', 'Help', 'Open...', and 'Save...'.

Figure 11-C: The Define Query dialog box

### **Range Section**

Select the range of labels you wish to print. The default value is All Records. If you accept the default, Loftware Label Manager prints all of the records in the database. You can, however, select a discrete range for printing by choosing the Select From option. When you select this option, Loftware Label Manager allows you to define a range from a selected field on the label.

### **Choosing the Start and End Value of Select From Field**

1. Choose the field from which you want the records to print. This can be different from the key assigned in label design. Only those fields in the database that are attached to the label are displayed in this list.
2. Enter a start value in the Start Value box. For example, type “A100” if you are beginning the print run with Part No. A100.
3. Enter an end value in the End Value box. For example, type “C300” if you are ending the print run with Part No. C300.

### **Ordering Section**

The Ordering function allows you to arrange the sequence of your print run. For example, by part number in ascending or descending order. The default value (None) prints the records in the order that occur in the database.

- Select the appropriate Field that orders the print run from the list of available fields.
- Select Ascending or Descending, depending on how you wish your labels to print.

### **Advanced Section**

#### **Using a Custom Where Clause**

If you have special needs, you can define your own SQL statements to determine which records are selected for printing.

- If you check the Use Custom Where Clause check box, the Select From range definition (in the Range group box) is not used.

- In this case, you can type a SQL statement into the Where Clause edit window, if you are familiar with the SQL language.

The following are examples of possible syntaxes of a Custom Where Clause written in Range Print when defining a specific query, using the Custom Where Clause option.

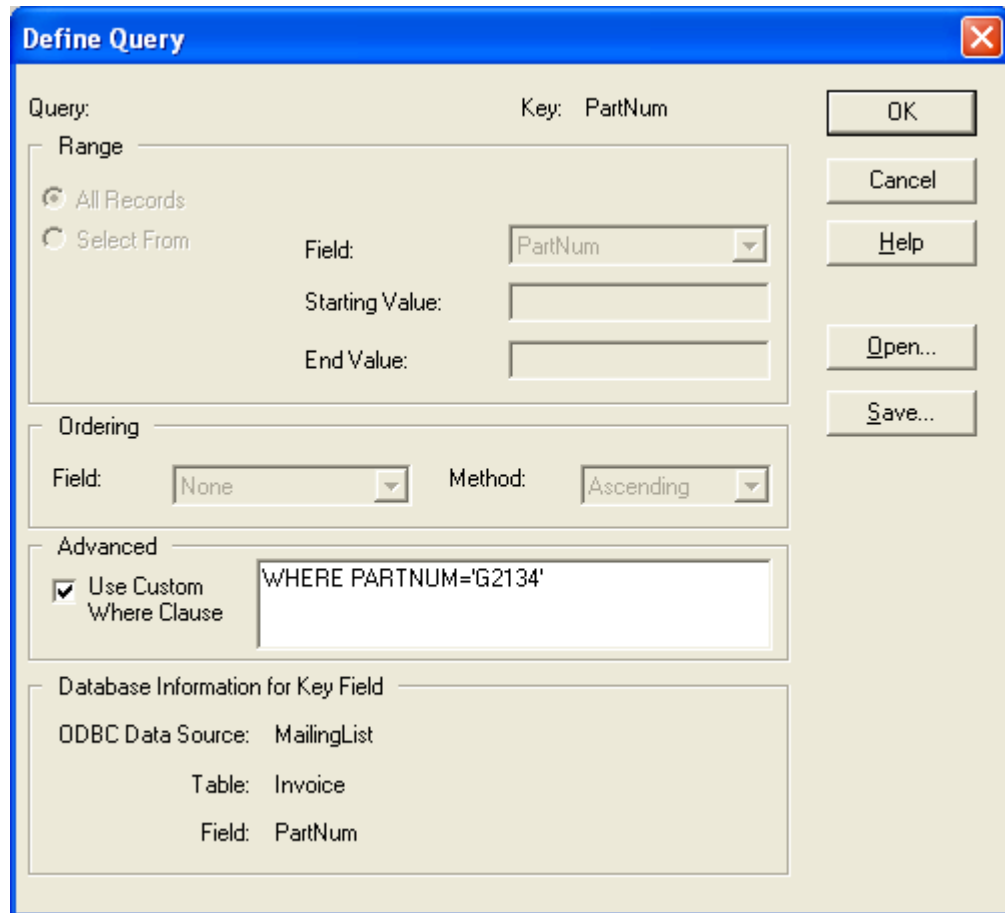


Figure 11-D: Using the Custom Where Clause

The database table used for this example is called Lesson2.database and it has a label with a database key field attached to the STOCKNUM column in the database. The following table displays the operators that could be used in the query and what they mean.

## Range Printing

Operator	Comparison
=	Exactly Equal
LIKE	SQL LIKE
<> != #	Not equal
>	More than
>=	More than or equal to
<	Less than
<=	Less than or equal to

WHERE PARTNUM = 'A100'	Prints only the record A100
WHERE PARTNUM <> 'A100'	Prints all the records in the database except A100
WHERE PARTNUM >= 'A100'	Prints all records in the database including A100
WHERE PARTNUM='A100' OR PARTNUM='A300'	Prints record A100 and A300

### Saving a Query

It is always a good idea to save your queries to avoid the need to reconstruct them again if you need to reprint the same labels in the Range Printing mode.

1. Click **Save** in the Define Query dialog box.
2. Enter a name for the query file, using .lwq as the filename extension.
3. Click **OK**.

### Opening an Existing Query

To load an existing query:

- Click **Open** in the Define Query dialog box; select the appropriate file name from the list of .lwq files.

## Automating the Range Printing Process

The Range Printing application supports several command line parameters that let you automate the printing process. Using these command line parameters, you can launch range printing without any operator intervention.

When you run Range Printing from your application or from a Windows program icon, the Command line parameters are specified after the program name.

### Automated Range Print Examples

#### Example 1

```
LLMWRP32 invtag.lwl -Qinvtag.lwq
```

Runs the specified label and query and then exits the range printing application.

The range print application (LLMWRP32.EXE) recognizes the following command line parameters:

Command Line Parameter	Definition
label_ filename	The name of the label to print.
-Qquery_ filename	The name of the query to use.
-W "sql query"	A custom where clause, must be enclosed in quotes.
-Pn	Assign range to printer n, where n is the printer number (for example, -P2 assigns the job to Printer No. 2).
-Nn	Sets the Quantity value to n (for example, -N3 produces three copies of the label).
-Dn	Sets the Duplicates value to n (for example, -D2 produces two duplicates of the label).
-M	Manual printing. Loads the label and the query and then waits for the operator to initiate printing.
-A	Maximize the application window using a command line.
-I	Minimize the application window using a command line.
-Rn	(non-interactive) Job Repeat count (for example, -R3 means job runs 3 times).
-E	Do not display Demo Mode warning screen message.
-J	Tells Range Print not to re-download formats and graphics. This saves throughput time when making back-to-back calls to Range Print modules with the same label format.

#### Example 2

```
LLMWRP32 invtag.lwl -Qinvtag.lwq -P1 -N2 -D1
```

## Range Printing

Would load the invtag.lwl label and invtag.lwq query, set the selected printer to Printer 1, set Quantity to 2 and Duplicates to 1, print the entire selected range and then exit back to the calling program.

### Create an Icon to Run Range Print

If you have a range print that must be run repeatedly, you can create an icon on the Windows desktop that the operator can use to run the range print by double clicking on the icon. For example, create an icon that the operator double clicks to print a range of inventory labels. The name of the label to print is INVTAG.LWL and the name of query is INVTAG.LWQ.

### Range Print Audit Files

Range Printing has the ability to capture label information that is requested and printed.

#### Related Information

To enable Audit Files, see the Audit Files section of the Customize section of this guide.